

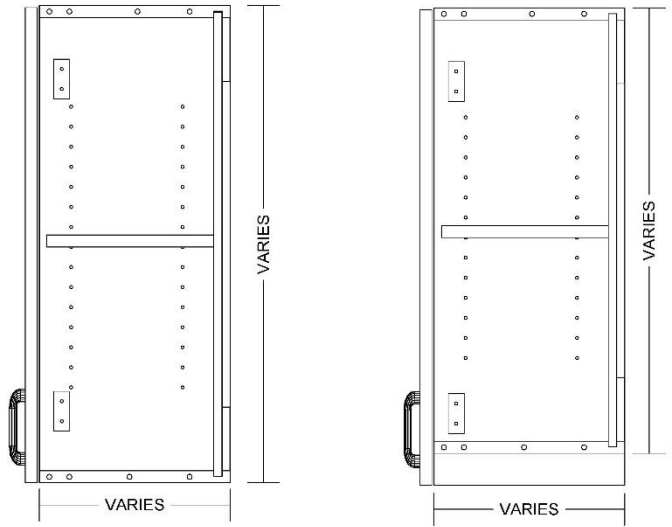
W1DL / W1DR



Left Hand Hinge

Right Hand Hinge

Single door wall cabinet



TYPICAL: W1DL-1AS-M

W1DR-1AS-M

WITH & W/OUT LIGHT RAIL APPLICATIONS

Laminate cabinets are available in a wide range of standard features and options. Additionally, custom configurations are possible. The website supports many of the features needed to quote and order commercial grade laminate or melamine products. The best value is made available by selecting from the standard features listed below.

Standard door

Left hand hinge
Right hand hinge

Standard Sizes

Width ranges 9" to 24"
Height ranges 12" to 48"
Depth ranges 9" to 24"

Standard features

Unfinished Sides – ¾" white melamine
Finished Sides - ¾" HPL exterior, white liner interior
Finished bottom - ¾" HPL exterior, white liner interior
Unfinished top - ¾" white melamine
Unfinished back – ½" white melamine (Dado in sides)
Unfinished shelves - ¾" white melamine (Less than 27" wide)
Unfinished shelves – 1" white melamine (27" and wider)
Doors – ¾" HPL exterior, white liner interior
Cabinet edge band - .018 PVC
Door edge band – .018 PVC or 3mm PVC

Standard Hardware

Hinges – BLUM 71B3580 110 Degree Soft Close Hinge W/Plate
Pull – 4" satin chrome wire pull
Shelf Clips – 5mm metal spoon

Standard Options

Finished ends – ¾" HPL exterior, white liner interior
Light Rails – ¾" HPL strip, shipped loose for field installation. (Light rail butts finished ends.) (Cabinet Height does not include height of the light rail)

Custom Options

Hang rails – ¾" plywood "French Cleats". Wall cleat shipped loose for field installation.
Locks – Timberline CB-093 Keyed alike
Finished Interiors – ¾" HPL interiors with either white liner exterior or matching HPL exteriors, determined by finished end selection.

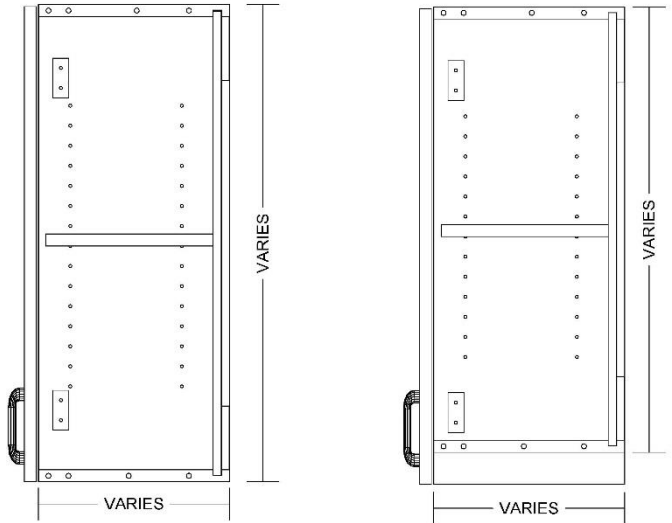
Accessory Options

See Accessory list which include Hardware, Components and Operations.

W2D



Double door wall cabinet



**TYPICAL: W2D-1AS-M
WITH & W/OUT LIGHT RAIL APPLICATIONS**

Laminate cabinets are available in a wide range of standard features and options. Additionally, custom configurations are possible. The website supports many of the features needed to quote and order commercial grade laminate or melamine products. The best value is made available by selecting from the standard features listed below.

Standard door

Hinged in Pairs

Standard Sizes

Width ranges 18" to 39"
Height ranges 12" to 48"
Depth ranges 9" to 24"

Standard features

Unfinished Sides – 3/8" white melamine
Finished Sides - 3/4" HPL exterior, white liner interior
Finished bottom - 3/4" HPL exterior, white liner interior
Unfinished top - 3/8" white melamine
Unfinished back – 1/2" white melamine (Dado in sides)
Unfinished shelves - 3/8" white melamine (Less than 27" wide)
Unfinished shelves – 1" white melamine (27" and wider)
Doors – 3/4" HPL exterior, white liner interior
Cabinet edge band - .018 PVC
Door edge band – .018 PVC or 3mm PVC

Standard Hardware

Hinges – BLUM 71B3580 110 Degree Soft Close Hinge W/Plate
Pull – 4" satin chrome wire pull
Shelf Clips – 5mm metal spoon

Standard Options

Finished ends – 3/4" HPL exterior, white liner interior
Light Rails – 3/4" HPL strip, shipped loose for field installation. (Light rail butts finished ends.) (Cabinet Height does not include height of the light rail.)

Custom Options

Hang rails – 3/4" plywood "French Cleats". Wall cleat shipped loose for field installation.
Locks – Timberline CB-093 Keyed alike
Finished Interiors – 3/4" HPL interiors with either white liner exterior or matching HPL exteriors, determined by finished end selection.

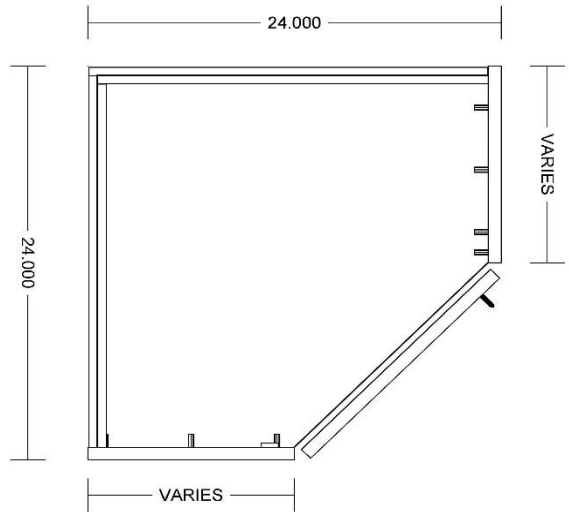
Accessory Options

See Accessory list which include Hardware, Components and Operations.

W1D-CORNER



Left Hand Hinge Right Hand Hinge
Single door wall cabinet with
45-degree door
for corner application



TYPICAL: W1DL-1AS-M
W1DR-1AS-M

Laminate cabinets are available in a wide range of standard features and options. Additionally, custom configurations are possible. The website supports many of the features needed to quote and order commercial grade laminate or melamine products. The best value is made available by selecting from the standard features listed below.

Standard door

- Left hand hinge
- Right hand hinge

Standard Sizes

- Width ranges 24" to 30" (Cabinet Depths will be adjusted to match adjoining cabinets)
- Height ranges 12" to 48"
- Depth ranges 24" to 30" (Cabinet Depths will be adjusted to match adjoining cabinets)

Standard features

- Unfinished Sides – ¾" white melamine
- Finished Sides - ¾" HPL exterior, white liner interior
- Finished bottom - ¾" HPL exterior, white liner interior
- Unfinished top - ¾" white melamine
- Unfinished back – ½" white melamine (Dado in sides)
- Unfinished shelves - ¾" white melamine (Less than 27" wide)
- Unfinished shelves – 1" white melamine (27" and wider)
- Doors – ¾" HPL exterior, white liner interior
- Cabinet edge band - .018 PVC
- Door edge band – .018 PVC or 3mm PVC

Standard Hardware

- Hinges – BLUM 71B3580 110 Degree Soft Close Hinge W/Plate
- Pull – 4" satin chrome wire pull
- Shelf Clips – 5mm metal spoon

Standard Options

- Finished ends – ¾" HPL exterior, white liner interior
- Light Rails – ¾" HPL strip, shipped loose for field installation. (Light rail butts finished ends.) (Cabinet Height does not include height of the light rail.)

Custom Options

- Hang rails – ¾" plywood "French Cleats". Wall cleat shipped loose for field installation.
- Locks – Timberline CB-093 Keyed alike
- Finished Interiors – ¾" HPL interiors with either white liner exterior or matching HPL exteriors, determined by finished end selection.

Accessory Options

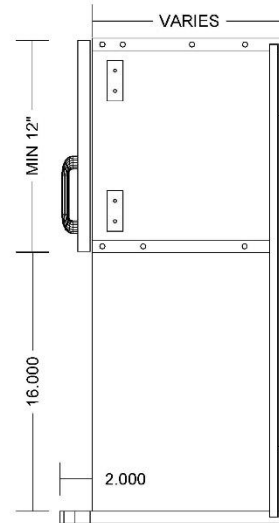
See Accessory list which include Hardware, Components and Operations.

W2D-MW



Radius Corner

Double door wall cabinet with microwave space



TYPICAL: W2D-MW-0AS-L-B2
NO LIGHT RAIL APPLICATIONS

Laminate cabinets are available in a wide range of standard features and options. Additionally, custom configurations are possible. The website supports many of the features needed to quote and order commercial grade laminate or melamine products. The best value is made available by selecting from the standard features listed below.

Standard door

Hinged in Pairs

Standard Sizes

Width ranges 18" to 39"
Height ranges 12" to 48"
Depth ranges 9" to 24"

Standard features

Unfinished Sides – ¾" HPL Interior, white liner exterior
Finished Sides - ¾" HPL exterior, HPL interior
Finished bottom - ¾" HPL exterior, HPL interior (Radius corner on extended bottom)
Unfinished top - ¾" HPL Interior, white liner exterior
Unfinished back – ½" HPL interior, white liner exterior
Unfinished shelves - ¾" white melamine (Less than 27" wide)
Unfinished shelves – 1" white melamine (27" and wider)
Doors – ¾" HPL exterior, white liner interior
Cabinet edge band - .018 PVC
Door edge band – .018 PVC or 3mm PVC

Standard Hardware

Hinges – BLUM 71B3580 110 Degree Soft Close Hinge W/Plate
Pull – 4" satin chrome wire pull
Shelf Clips – 5mm metal spoon

Standard Options

Finished ends – ¾" HPL exterior, HPL interior
Light Rails – Light rails are not recommended for this cabinet

Custom Options

Hang rails – ¾" plywood "French Cleats". Wall cleat shipped loose for field installation.
Locks – Timberline CB-093 Keyed alike
Finished Interiors are standard because of the exposed open area. Please unselect FI if white melamine is desired

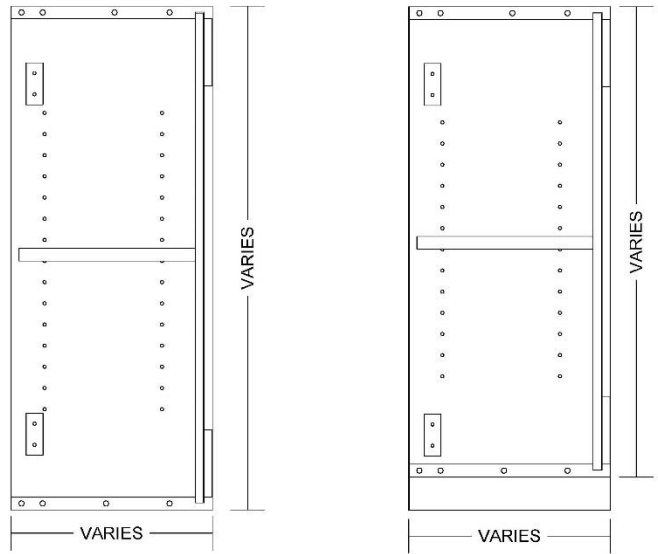
Accessory Options

See Accessory list which include Hardware, Components and Operations.

WOPEN



Open wall cabinet



TYPICAL: WOPEN-1AS-L
WITH & W/OUT LIGHT RAIL APPLICATIONS

Laminate cabinets are available in a wide range of standard features and options. Additionally, custom configurations are possible. The website supports many of the features needed to quote and order commercial grade laminate or melamine products. The best value is made available by selecting from the standard features listed below.

Standard door

None

Standard Sizes

Width ranges 9" to 39"
Height ranges 12" to 48"
Depth ranges 9" to 24"

Standard features

Unfinished Sides – 3/4" HPL Interior, white liner exterior
Finished Sides - 3/4" HPL exterior, HPL interior
Finished bottom - 3/4" HPL exterior, HPL interior
Unfinished top - 3/4" HPL Interior, white liner exterior
Unfinished back – 1/2" HPL interior, white liner exterior
Unfinished shelves - 3/4" HPL 2 sides (Less than 27" wide)
Unfinished shelves – 1" HPL 2 sides (27" and wider)
Doors – None
Cabinet edge band - .018 PVC
Door edge band – .None

Standard Hardware

Hinges – None
Pull – None
Shelf Clips – 5mm metal spoon

Standard Options

Finished ends – 3/4" HPL exterior, HPL interior
Light Rails – 3/4" HPL strip, shipped loose for field installation. (Light rail butts finished ends.) (Cabinet Height does not include height of the light rail)

Custom Options

Hang rails – 3/4" plywood "French Cleats". Wall cleat shipped loose for field installation.
Locks – None
Finished Interiors – Finished Interiors are standard because of the exposed open area. Please unselect FI if white melamine is desired

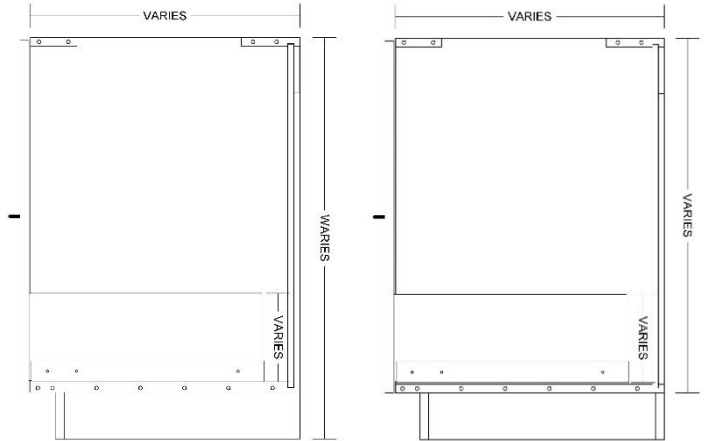
Accessory Options

See Accessory list which include Hardware, Components and Operations.

B0D1D



Base 1 drawer cabinet



**TYPICAL: B0D1D-M
INTEGRAL BASE**

Laminate cabinets are available in a wide range of standard features and options. Additionally, custom configurations are possible. The website supports many of the features needed to quote and order commercial grade laminate or melamine products. The best value is made available by selecting from the standard features listed below.

Standard door

None

Standard Sizes

Width ranges 9" to 30"
Height ranges 18" to 42"
Depth ranges 9" to 30"

Standard features

Unfinished Sides – ¾" white melamine
Finished Sides - ¾" HPL exterior, white liner interior
Unfinished bottom - ¾" white melamine
Unfinished top stretchers - ¾" white melamine
Unfinished back – ½" white melamine (Dado in sides)
Unfinished shelves - None
Unfinished shelves – None
Drawer front – ¾" HPL exterior, white liner interior
Cabinet edge band - .018 PVC
Drawer front edge band – .018 PVC or 3mm PVC
Drawer Box – ½" white melamine

Standard Hardware

Hinges – None
Drawer Slide – Richelieu 1045H 20" soft close ball bearing slide / Load Capacity 771B (Side Mount Only)
Pull – 4" satin chrome wire pull
Shelf Clips – None

Standard Options

Finished ends – ¾" HPL exterior, white liner interior

Custom Options

Sub-Bases – ¾" plywood construction (Cabinets have a flush bottom, sub-bases ordered separately)
Locks – Timberline CB-093 Keyed alike
Finished Interiors – ¾" HPL interiors with either white liner exterior or matching HPL exteriors, determined by finished end selection.

Accessory Options

See Accessory list which include Hardware, Components and Operations.

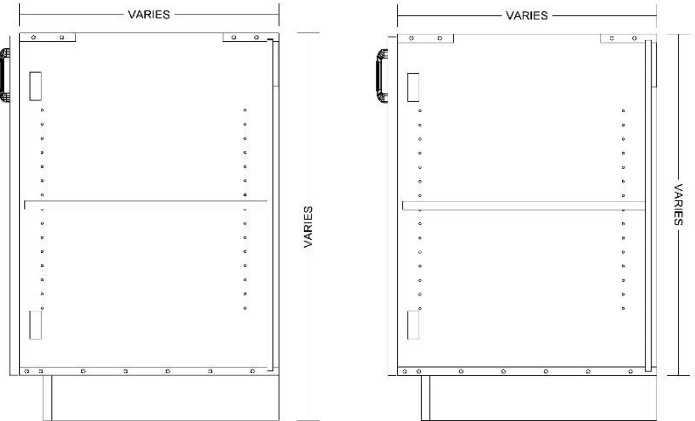
B1DL / B1DR



Left Hand Hinge

Right Hand Hinge

Base 1 door cabinet



TYPICAL: B1DL-1AS-M
B1DR-1AS-M
INTEGRAL BASE

Laminate cabinets are available in a wide range of standard features and options. Additionally, custom configurations are possible. The website supports many of the features needed to quote and order commercial grade laminate or melamine products. The best value is made available by selecting from the standard features listed below.

Standard door

- Left hand hinge
- Right hand hinge

Standard Sizes

- Width ranges 9" to 24"
- Height ranges 18" to 42"
- Depth ranges 9" to 30"

Standard features

- Unfinished Sides – 3/4" white melamine
- Finished Sides - 3/4" HPL exterior, white liner interior
- Unfinished bottom - 3/4" white melamine
- Unfinished top stretchers - 3/4" white melamine
- Unfinished back – 1/2" white melamine (Dado in sides)
- Unfinished shelves - 3/4" white melamine (Less than 27" wide)
- Unfinished shelves – 1" white melamine (27" and wider)
- Doors – 3/4" HPL exterior, white liner interior
- Cabinet edge band - .018 PVC
- Door edge band – .018 PVC or 3mm PVC

Standard Hardware

- Hinges – BLUM 71B3580 110 Degree Soft Close Hinge W/Plate
- Pull – 4" satin chrome wire pull
- Shelf Clips – 5mm metal spoon

Standard Options

- Finished ends – 3/4" HPL exterior, white liner interior

Custom Options

- Sub-Bases – 3/4" plywood construction (Cabinets have a flush bottom, sub-bases ordered separately)
- Locks – Timberline CB-093 Keyed alike
- Finished Interiors – 3/4" HPL interiors with either white liner exterior or matching HPL exteriors, determined by finished end selection.

Accessory Options

See Accessory list which include Hardware, Components and Operations.

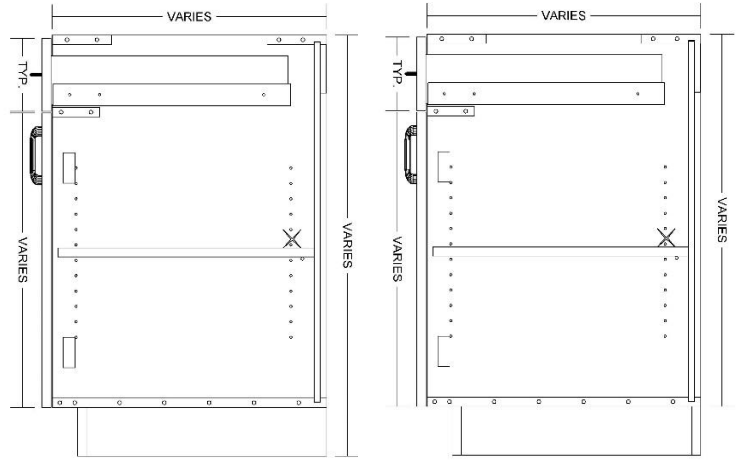
B1D1DL / B1D1DR



Left Hand Hinge

Right Hand Hinge

**Base 1 door, 1 drawer cabinet
Typical top-drawer front 6" high**



**TYPICAL: B1D1DL-1AS-M
B1DR1R-1AS-M
INTEGRAL BASE**

Laminate cabinets are available in a wide range of standard features and options. Additionally, custom configurations are possible. The website supports many of the features needed to quote and order commercial grade laminate or melamine products. The best value is made available by selecting from the standard features listed below.

Standard door

- Left hand hinge
- Right hand hinge

Standard Sizes

- Width ranges 9" to 24"
- Height ranges 18" to 42"
- Depth ranges 9" to 30"

Standard features

- Unfinished Sides – 3/4" white melamine
- Finished Sides - 3/4" HPL exterior, white liner interior
- Unfinished bottom - 3/4" white melamine
- Unfinished top stretchers - 3/4" white melamine
- Unfinished back – 1/2" white melamine (Dado in sides)
- Unfinished shelves - 3/4" white melamine (Less than 27" wide)
- Unfinished shelves – 1" white melamine (27" and wider)
- Door and Drawer front – 3/4" HPL exterior, white liner interior
- Cabinet edge band - .018 PVC
- Door and Drawer front edge band – .018 PVC or 3mm PVC
- Drawer Box – 1/2" white melamine

Standard Hardware

- Hinges – BLUM 71B3580 110 Degree Soft Close Hinge W/Plate
- Drawer Slide – Richelieu 1045H 20" soft close ball bearing slide / Load Capacity 771B (Side Mount Only)
- Pull – 4" satin chrome wire pull
- Shelf Clips – 5mm metal spoon

Standard Options

- Finished ends – 3/4" HPL exterior, white liner interior

Custom Options

- Sub-Bases – 3/4" plywood construction (Cabinets have a flush bottom, sub-bases ordered separately)
- Locks – Timberline CB-093 Keyed alike
- Finished Interiors – 3/4" HPL interiors with either white liner exterior or matching HPL exteriors, determined by finished end selection.

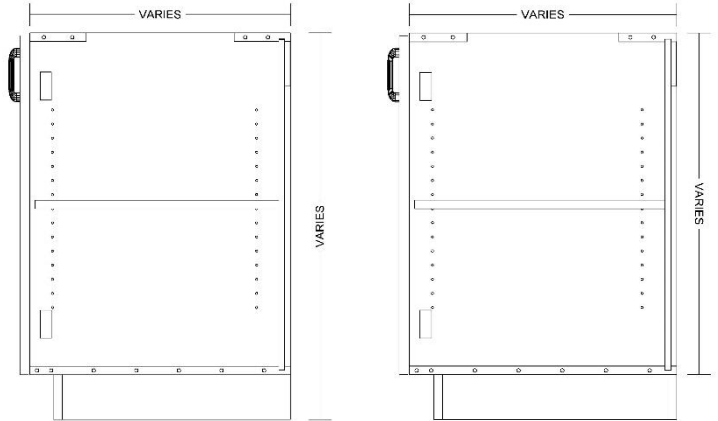
Accessory Options

See Accessory list which include Hardware, Components and Operations.

B2D



Base 2 door cabinet



**TYPICAL: B2D-1AS-M
INTEGRAL BASE**

Laminate cabinets are available in a wide range of standard features and options. Additionally, custom configurations are possible. The website supports many of the features needed to quote and order commercial grade laminate or melamine products. The best value is made available by selecting from the standard features listed below.

Standard door

Pair Hinges

Standard Sizes

Width ranges 18" to 39"
Height ranges 18" to 42"
Depth ranges 9" to 30"

Standard features

Unfinished Sides – ¾" white melamine
Finished Sides - ¾" HPL exterior, white liner interior
Unfinished bottom - ¾" white melamine
Unfinished top stretchers - ¾" white melamine
Unfinished back – ½" white melamine (Dado in sides)
Unfinished shelves - ¾" white melamine (Less than 27" wide)
Unfinished shelves – 1" white melamine (27" and wider)
Doors – ¾" HPL exterior, white liner interior
Cabinet edge band - .018 PVC
Door edge band – .018 PVC or 3mm PVC

Standard Hardware

Hinges – BLUM 71B3580 110 Degree Soft Close Hinge W/Plate
Pull – 4" satin chrome wire pull
Shelf Clips – 5mm metal spoon

Standard Options

Finished ends – ¾" HPL exterior, white liner interior

Custom Options

Sub-Bases – ¾" plywood construction (Cabinets have a flush bottom, sub-bases ordered separately)
Locks – Timberline CB-093 Keyed alike
Finished Interiors – ¾" HPL interiors with either white liner exterior or matching HPL exteriors, determined by finished end selection.

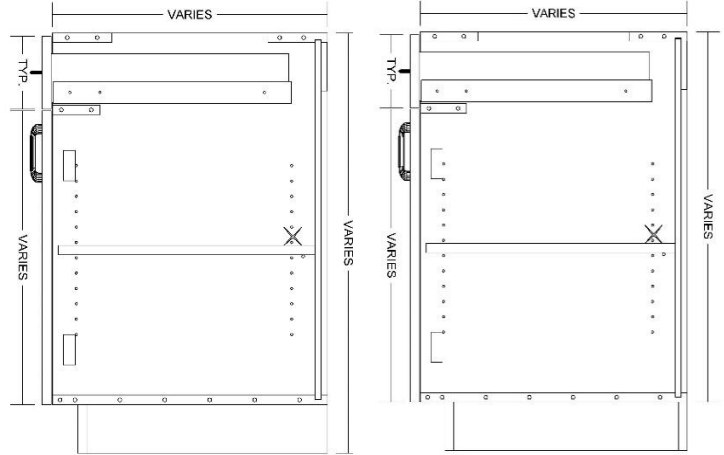
Accessory Options

See Accessory list which include Hardware, Components and Operations.

B2D1D



Base 2 door, 1 drawer cabinet
Typical Top-drawer front 6" high



TYPICAL: B2D1D-1AS-M
INTEGRAL BASE

Laminate cabinets are available in a wide range of standard features and options. Additionally, custom configurations are possible. The website supports many of the features needed to quote and order commercial grade laminate or melamine products. The best value is made available by selecting from the standard features listed below.

Standard door

Pair Hinges

Standard Sizes

Width ranges 18" to 39"
 Height ranges 18" to 42"
 Depth ranges 9" to 30"

Standard features

Unfinished Sides – ¾" white melamine
 Finished Sides - ¾" HPL exterior, white liner interior
 Unfinished bottom - ¾" white melamine
 Unfinished top stretchers - ¾" white melamine
 Unfinished back – ½" white melamine (Dado in sides)
 Unfinished shelves - ¾" white melamine (Less than 27" wide)
 Unfinished shelves – 1" white melamine (27" and wider)
 Doors and Drawer front – ¾" HPL exterior, white liner interior
 Cabinet edge band - .018 PVC
 Door and Drawer front edge band – .018 PVC or 3mm PVC
 Drawer Box – ½" white melamine

Standard Hardware

Hinges – BLUM 71B3580 110 Degree Soft Close Hinge W/Plate
 Drawer Slide – Richelieu 1045H 20" soft close ball bearing slide / Load Capacity 771B (Side Mount Only)
 Pull – 4" satin chrome wire pull
 Shelf Clips – 5mm metal spoon

Standard Options

Finished ends – ¾" HPL exterior, white liner interior

Custom Options

Sub-Bases – ¾" plywood construction (Cabinets have a flush bottom, sub-bases ordered separately)
 Locks – Timberline CB-093 Keyed alike
 Finished Interiors – ¾" HPL interiors with either white liner exterior or matching HPL exteriors, determined by finished end selection.

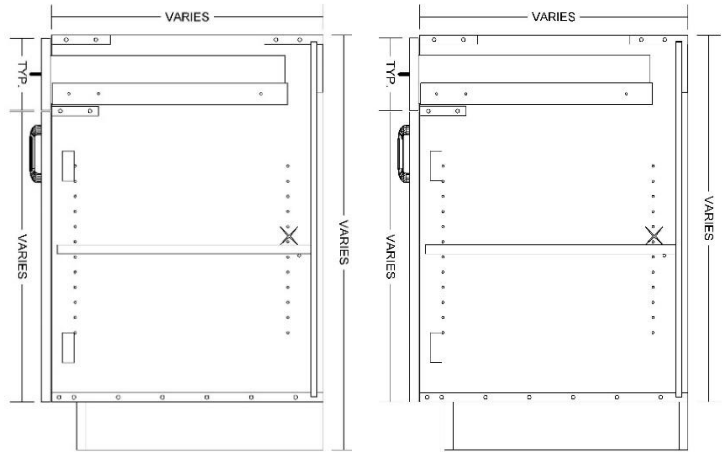
Accessory Options

See Accessory list which include Hardware, Components and Operations.

B2D2D



Base 2 doors, 2 drawers cabinet
Typical Top-drawer front 6" high



TYPICAL: B2D2D-1AS-M
INTEGRAL BASE

Laminate cabinets are available in a wide range of standard features and options. Additionally, custom configurations are possible. The website supports many of the features needed to quote and order commercial grade laminate or melamine products. The best value is made available by selecting from the standard features listed below.

Standard door

Pair Hinges

Standard Sizes

Width ranges 18" to 39"
 Height ranges 18" to 42"
 Depth ranges 9" to 30"

Standard features

Unfinished Sides – 3/4" white melamine
 Finished Sides - 3/4" HPL exterior, white liner interior
 Unfinished bottom - 3/4" white melamine
 Unfinished top stretchers - 3/4" white melamine
 Unfinished back – 1/2" white melamine (Dado in sides)
 Unfinished shelves - 3/4" white melamine (Less than 27" wide)
 Unfinished shelves – 1" white melamine (27" and wider)
 Doors and Drawer front – 3/4" HPL exterior, white liner interior
 Cabinet edge band - .018 PVC
 Door and Drawer front edge band – .018 PVC or 3mm PVC
 Drawer Box – 1/2" white melamine

Standard Hardware

Hinges – BLUM 71B3580 110 Degree Soft Close Hinge W/Plate
 Drawer Slide – Richelieu 1045H 20" soft close ball bearing slide / Load Capacity 771B (Side Mount Only)
 Pull – 4" satin chrome wire pull
 Shelf Clips – 5mm metal spoon

Standard Options

Finished ends – 3/4" HPL exterior, white liner interior

Custom Options

Sub-Bases – 3/4" plywood construction (Cabinets have a flush bottom, sub-bases ordered separately)
 Locks – Timberline CB-093 Keyed alike
 Finished Interiors – 3/4" HPL interiors with either white liner exterior or matching HPL exteriors, determined by finished end selection.

Accessory Options

See Accessory list which include Hardware, Components and Operations.

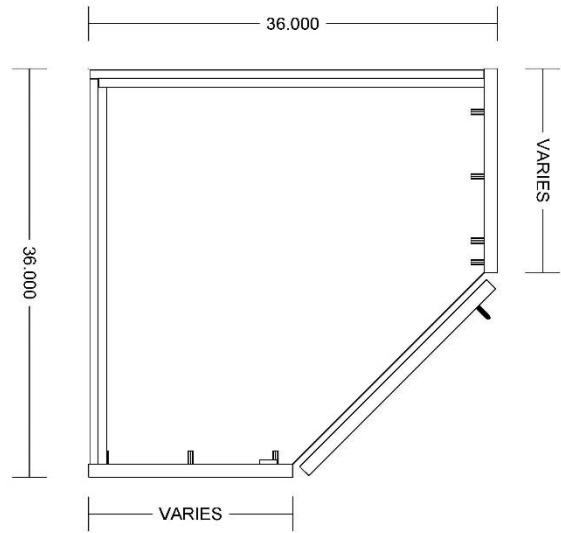
B1DL-CRN / B1DR-CRN



Left Hand Hinge

Right Hand Hinge

**Base single door cabinet with
45-degree door
for corner application**



**TYPICAL: B1DL-CRN-1AS-M
B1DR-CRN-1AS-M**

Laminate cabinets are available in a wide range of standard features and options. Additionally, custom configurations are possible. The website supports many of the features needed to quote and order commercial grade laminate or melamine products. The best value is made available by selecting from the standard features listed below.

Standard door

Left hand hinge
Right hand hinge

Standard Sizes

Width ranges 24" to 45"
Height ranges 18" to 42"
Depth ranges 9" to 30"

Standard features

Unfinished Sides – ¾" white melamine
Finished Sides - ¾" HPL exterior, white liner interior
Unfinished bottom - ¾" white melamine
Unfinished top stretchers - ¾" white melamine
Unfinished back – ½" white melamine (Dado in sides)
Unfinished shelves - ¾" white melamine (Less than 27" wide)
Unfinished shelves – 1" white melamine (27" and wider)
Doors – ¾" HPL exterior, white liner interior
Cabinet edge band - .018 PVC
Door edge band – .018 PVC or 3mm PVC

Standard Hardware

Hinges – (Blind cabinet hinge)
Pull – 4" satin chrome wire pull
Shelf Clips – 5mm metal spoon

Standard Options

Finished ends – ¾" HPL exterior, white liner interior

Custom Options

Sub-Bases – ¾" plywood construction (Cabinets have a flush bottom, sub-bases ordered separately)
Locks – Timberline CB-093 Keyed alike
Finished Interiors – ¾" HPL interiors with either white liner exterior or matching HPL exteriors, determined by finished end selection.

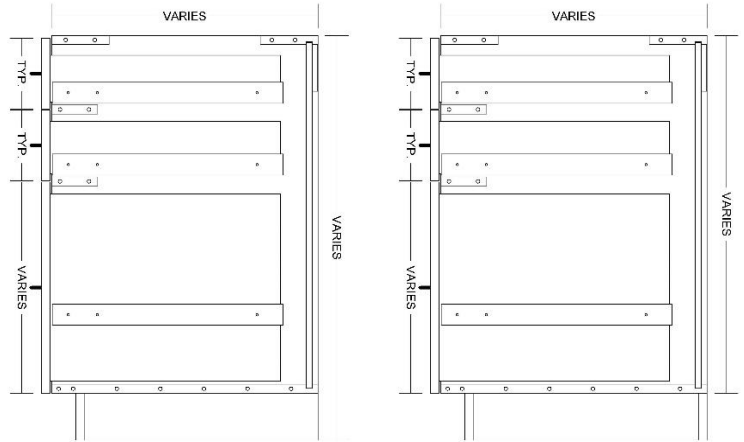
Accessory Options

See Accessory list which include Hardware, Components and Operations.

B0D3D



**Base 3 drawer cabinet,
Typical Top 2 drawer fronts 6" high**



**TYPICAL: B0D3D-2-M
INTEGRAL BASE**

Laminate cabinets are available in a wide range of standard features and options. Additionally, custom configurations are possible. The website supports many of the features needed to quote and order commercial grade laminate or melamine products. The best value is made available by selecting from the standard features listed below.

Standard door

None

Standard Sizes

Width ranges 9" to 30"
Height ranges 18" to 42"
Depth ranges 9" to 30"

Standard features

Unfinished Sides – ¾" white melamine
Finished Sides - ¾" HPL exterior, white liner interior
Unfinished bottom - ¾" white melamine
Unfinished top stretchers - ¾" white melamine
Unfinished back – ½" white melamine (Dado in sides)
Unfinished shelves - None
Unfinished shelves – None
Drawer front – ¾" HPL exterior, white liner interior
Cabinet edge band - .018 PVC
Drawer front edge band – .018 PVC or 3mm PVC
Drawer Box – ½" white melamine

Standard Hardware

Hinges – None
Drawer Slide – Richelieu 1045H 20" soft close ball bearing slide / Load Capacity 77IB (Side Mount Only)
Pull – 4" satin chrome wire pull
Shelf Clips – None

Standard Options

Finished ends – ¾" HPL exterior, white liner interior

Custom Options

Sub-Bases – ¾" plywood construction (Cabinets have a flush bottom, sub-bases ordered separately)
Locks – Timberline CB-093 Keyed alike
Finished Interiors – ¾" HPL interiors with either white liner exterior or matching HPL exteriors, determined by finished end selection.

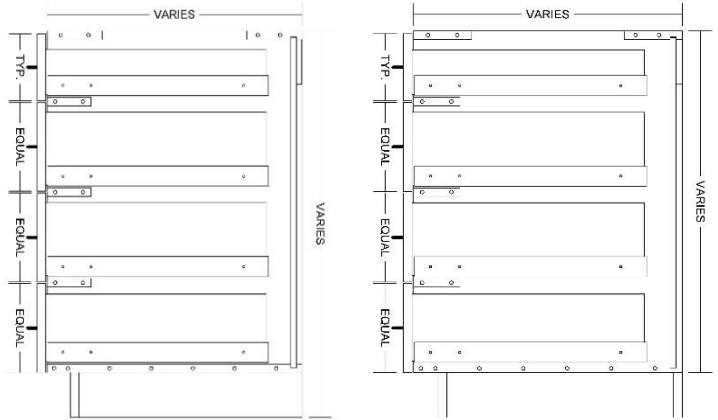
Accessory Options

See Accessory list which include Hardware, Components and Operations.

B0D4D



**Base 4 drawer cabinet,
Typical Top-drawer front 6" high**



**TYPICAL: B0D4D-1-M
INTEGRAL BASE**

Laminate cabinets are available in a wide range of standard features and options. Additionally, custom configurations are possible. The website supports many of the features needed to quote and order commercial grade laminate or melamine products. The best value is made available by selecting from the standard features listed below.

Standard door

None

Standard Sizes

Width ranges 9" to 30"
Height ranges 18" to 42"
Depth ranges 9" to 30"

Standard features

Unfinished Sides – ¾" white melamine
Finished Sides - ¾" HPL exterior, white liner interior
Unfinished bottom - ¾" white melamine
Unfinished top stretchers - ¾" white melamine
Unfinished back – ½" white melamine (Dado in sides)
Unfinished shelves - None
Unfinished shelves – None
Drawer front – ¾" HPL exterior, white liner interior
Cabinet edge band - .018 PVC
Drawer front edge band – .018 PVC or 3mm PVC
Drawer Box – ½" white melamine

Standard Hardware

Hinges – None
Drawer Slide – Richelieu 1045H 20" soft close ball bearing slide / Load Capacity 771B (Side Mount Only)
Pull – 4" satin chrome wire pull
Shelf Clips – None

Standard Options

Finished ends – ¾" HPL exterior, white liner interior

Custom Options

Sub-Bases – ¾" plywood construction (Cabinets have a flush bottom, sub-bases ordered separately)
Locks – Timberline CB-093 Keyed alike
Finished Interiors – ¾" HPL interiors with either white liner exterior or matching HPL exteriors, determined by finished end selection.

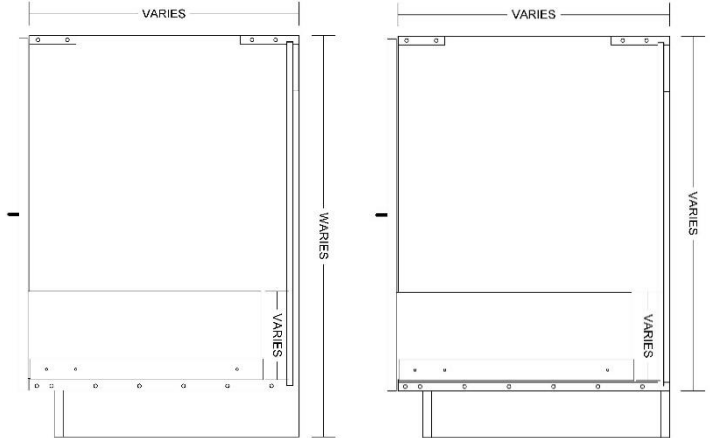
Accessory Options

See Accessory list which include Hardware, Components and Operations.

B0D1D-TRASH



**Base 1 drawer cabinet,
Trash Bin behind door**



**TYPICAL: B0D1D-M-TRASH
INTEGRAL BASE**

Laminate cabinets are available in a wide range of standard features and options. Additionally, custom configurations are possible. The website supports many of the features needed to quote and order commercial grade laminate or melamine products. The best value is made available by selecting from the standard features listed below.

Standard door

None

Standard Sizes

Width ranges 9" to 30"
Height ranges 18" to 42"
Depth ranges 9" to 30"

Standard features

Unfinished Sides – ¾" white melamine
Finished Sides - ¾" HPL exterior, white liner interior
Unfinished bottom - ¾" white melamine
Unfinished top stretchers - ¾" white melamine
Unfinished back – ½" white melamine (Dado in sides)
Unfinished shelves - None
Unfinished shelves – None
Drawer front – ¾" HPL exterior, white liner interior
Cabinet edge band - .018 PVC
Drawer front edge band – .018 PVC or 3mm PVC
Drawer Box – ½" white melamine

Standard Hardware

Hinges – None
Drawer Slide – Richelieu 1045H 20" soft close ball bearing slide / Load Capacity 771B (Side Mount Only)
Pull – 4" satin chrome wire pull
Shelf Clips – None
15 Quart Plastic Trash Bin (White) - Optional

Standard Options

Finished ends – ¾" HPL exterior, white liner interior

Custom Options

Sub-Bases – ¾" plywood construction (Cabinets have a flush bottom, sub-bases ordered separately)
Locks – Timberline CB-093 Keyed alike
Finished Interiors – ¾" HPL interiors with either white liner exterior or matching HPL exteriors, determined by finished end selection.

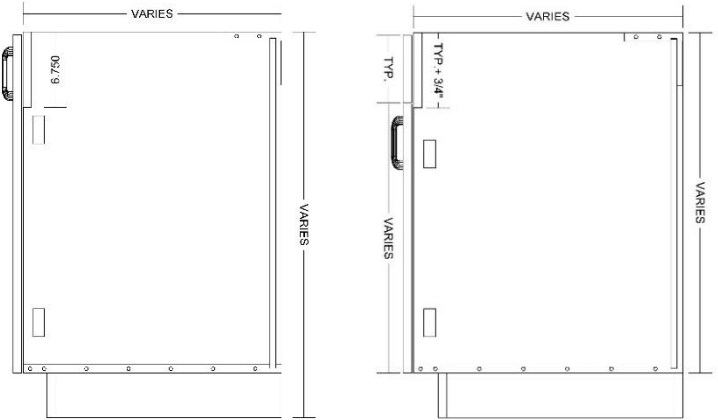
Accessory Options

See Accessory list which include Hardware, Components and Operations.

SB2D



**Base 2 door cabinet
with false front behind door**



**TYPICAL: SB2D-0AS-M
INTEGRAL BASE**

Laminate cabinets are available in a wide range of standard features and options. Additionally, custom configurations are possible. The website supports many of the features needed to quote and order commercial grade laminate or melamine products. The best value is made available by selecting from the standard features listed below.

Standard door

Pair Hinges

Standard Sizes

Width ranges 18" to 39"
Height ranges 18" to 42"
Depth ranges 9" to 30"

Standard features

Unfinished Sides – 3/4" white melamine
Finished Sides - 3/4" HPL exterior, white liner interior
Unfinished bottom - 3/4" white melamine
Unfinished top stretchers - 3/4" white melamine
Unfinished back – 1/2" white melamine (Dado in sides)
Unfinished shelves – 3/4" white melamine (Less than 27" wide)
Unfinished shelves – 1" white melamine (27" and wider)
Doors – 3/4" HPL exterior, white liner interior
Cabinet edge band - .018 PVC
Door edge band – .018 PVC or 3mm PVC

Standard Hardware

Hinges – BLUM 71B3580 110 Degree Soft Close Hinge W/Plate
Pull – 4" satin chrome wire pull
Shelf Clips – 5mm metal spoon

Standard Options

Finished ends – 3/4" HPL exterior, white liner interior

Custom Options

Sub-Bases – 3/4" plywood construction (Cabinets have a flush bottom, sub-bases ordered separately)
Locks – Timberline CB-093 Keyed alike
Finished Interiors – 3/4" HPL interiors with either white liner exterior or matching HPL exteriors, determined by finished end selection.

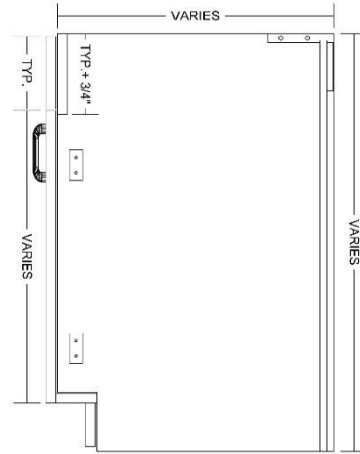
Accessory Options

See Accessory list which include Hardware, Components and Operations.

SB2D2F-ATK



**Base 2 doors, 2 false fronts cab.
Toe Kicks attached back of doors**



**TYPICAL: SB2D2F-ATK-M
INTEGRAL BASE**

Laminate cabinets are available in a wide range of standard features and options. Additionally, custom configurations are possible. The website supports many of the features needed to quote and order commercial grade laminate or melamine products. The best value is made available by selecting from the standard features listed below.

Standard door

Pair Hinges

Standard Sizes

Width ranges 18" to 39"
Height ranges 18" to 42"
Depth ranges 9" to 30"

Standard features

Unfinished Sides – 3/4" white melamine
Finished Sides - 3/4" HPL exterior, white liner interior
No bottom – Toe Kick attached to back of doors
Unfinished top stretchers - 3/4" white melamine
Unfinished back – 1/2" white melamine (Dado in sides)
Unfinished shelves - 3/4" white melamine (Less than 27" wide)
Unfinished shelves – 1" white melamine (27" and wider)
Doors and Drawer front – 3/4" HPL exterior, white liner interior
Cabinet edge band - .018 PVC
Door and Drawer front edge band – .018 PVC or 3mm PVC

Standard Hardware

Hinges – BLUM 71B3580 110 Degree Soft Close Hinge W/Plate
Pull – 4" satin chrome wire pull
Shelf Clips – 5mm metal spoon

Standard Options

Finished ends – 3/4" HPL exterior, white liner interior

Custom Options

Sub-Bases – 3/4" plywood construction (Cabinets have a flush bottom, sub-bases ordered separately)
Locks – Timberline CB-093 Keyed alike
Finished Interiors – 3/4" HPL interiors with either white liner exterior or matching HPL exteriors, determined by finished end selection.

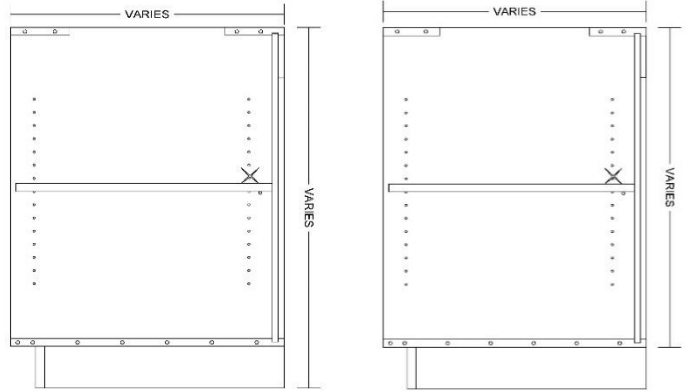
Accessory Options

See Accessory list which include Hardware, Components and Operations.

BOPEN



Base open cabinet



**TYPICAL: BOPEN-1AS-L
INTEGRAL BASE**

Laminate cabinets are available in a wide range of standard features and options. Additionally, custom configurations are possible. The website supports many of the features needed to quote and order commercial grade laminate or melamine products. The best value is made available by selecting from the standard features listed below.

Standard door

None

Standard Sizes

Width ranges 9" to 39"
Height ranges 12" to 42"
Depth ranges 9" to 30"

Standard features

Unfinished Sides – 3/4" HPL Interior, white liner exterior
Finished Sides - 3/4" HPL exterior, HPL interior
Finished bottom - 3/4" HPL exterior, HPL interior
Unfinished top - 3/4" HPL Interior, white liner exterior
Unfinished back – 1/2" HPL interior, white liner exterior
Unfinished shelves - 3/4" HPL 2 sides (Less than 27" wide)
Unfinished shelves – 1" HPL 2 sides (27" and wider)
Doors – None
Cabinet edge band - .018 PVC
Door edge band – .None

Standard Hardware

Hinges – None
Pull – None
Shelf Clips – 5mm metal spoon

Standard Options

Finished ends – 3/4" HPL exterior, 3/4" HPL exterior

Custom Options

Sub-Bases – 3/4" plywood construction (Cabinets have a flush bottom, sub-bases ordered separately)
Locks – None
Finished Interiors – Finished Interiors are standard because of the exposed open area. Please unselect FI if white melamine is desired

Accessory Options

See Accessory list which include Hardware, Components and Operations.

T1DL/T1DR

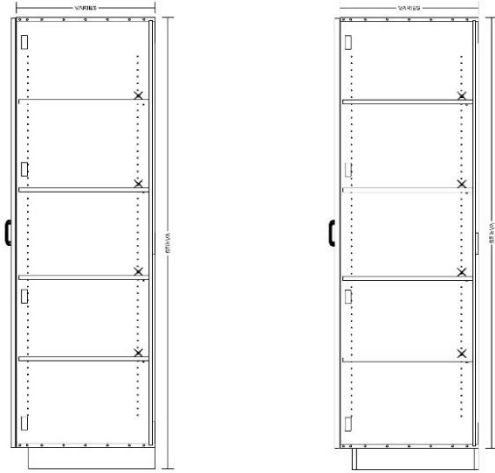


Left Hand Hinge



Right Hand Hinge

Tall 1 door cabinet



TYPICAL: T1DL-4AS-M
T1DR-4AS-M
INTEGRAL BASE

Laminate cabinets are available in a wide range of standard features and options. Additionally, custom configurations are possible. The website supports many of the features needed to quote and order commercial grade laminate or melamine products. The best value is made available by selecting from the standard features listed below.

Standard door

Left hand hinge
Right hand hinge

Standard Sizes

Width ranges 9" to 24"
Height ranges 42" to 84"
Depth ranges 9" to 30"

Standard features

Unfinished Sides – 3/4" white melamine
Finished Sides - 3/4" HPL exterior, white liner interior
Unfinished bottom - 3/4" white melamine
Unfinished top stretchers - 3/4" white melamine
Unfinished back – 1/2" white melamine (Dado in sides)
Unfinished shelves - 3/4" white melamine (Less than 27" wide)
Unfinished shelves – 1" white melamine (27" and wider)
Doors – 3/4" HPL exterior, white liner interior
Cabinet edge band - .018 PVC
Door edge band – .018 PVC or 3mm PVC

Standard Hardware

Hinges – BLUM 71B3580 110 Degree Soft Close Hinge W/Plate
Pull – 4" satin chrome wire pull
Shelf Clips – 5mm metal spoon

Standard Options

Finished ends – 3/4" HPL exterior, white liner interior

Custom Options

Sub-Bases – 3/4" plywood construction (Cabinets have a flush bottom, sub-bases ordered separately)
Locks – Timberline CB-093 Keyed alike
Finished Interiors – 3/4" HPL interiors with either white liner exterior or matching HPL exteriors, determined by finished end selection.

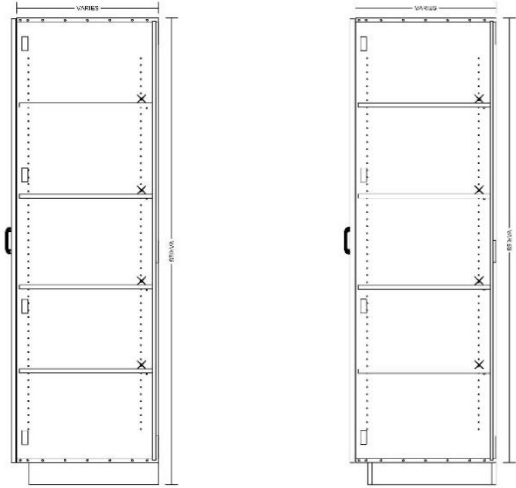
Accessory Options

See Accessory list which include Hardware, Components and Operations.

T2D



Tall 2 door cabinet



**TYPICAL: T2D-4AS-M
INTEGRAL BASE**

Laminate cabinets are available in a wide range of standard features and options. Additionally, custom configurations are possible. The website supports many of the features needed to quote and order commercial grade laminate or melamine products. The best value is made available by selecting from the standard features listed below.

Standard door

Pair Hinges

Standard Sizes

Width ranges 30" to 39"
Height ranges 42" to 96"
Depth ranges 9" to 30"

Standard features

Unfinished Sides – 3/4" white melamine
Finished Sides - 3/4" HPL exterior, white liner interior
Unfinished bottom - 3/4" white melamine
Unfinished top stretchers - 3/4" white melamine
Unfinished back – 1/2" white melamine (Dado in sides)
Unfinished shelves – 3/4" white melamine (Less than 27" wide)
Unfinished shelves – 1" white melamine (27" and wider)
Doors – 3/4" HPL exterior, white liner interior
Cabinet edge band - .018 PVC
Door edge band – .018 PVC or 3mm PVC

Standard Hardware

Hinges – BLUM 71B3580 110 Degree Soft Close Hinge W/Plate
Pull – 4" satin chrome wire pull
Shelf Clips – 5mm metal spoon

Standard Options

Finished ends – 3/4" HPL exterior, white liner interior

Custom Options

Sub-Bases – 3/4" plywood construction (Cabinets have a flush bottom, sub-bases ordered separately)
Locks – Timberline CB-093 Keyed alike
Finished Interiors – 3/4" HPL interiors with either white liner exterior or matching HPL exteriors, determined by finished end selection.

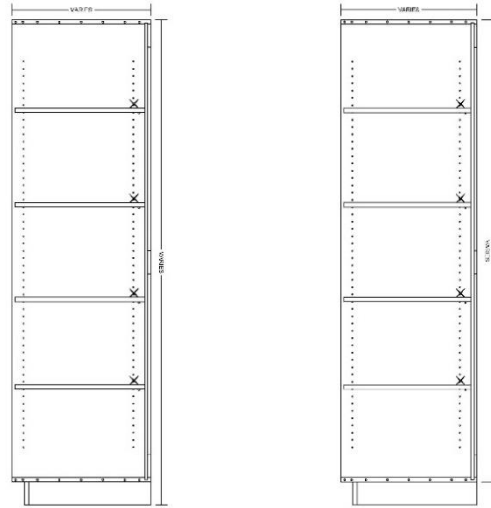
Accessory Options

See Accessory list which include Hardware, Components and Operations.

TOPEN



Tall open cabinet



TYPICAL: TOPEN-4AS-L
INTEGRAL BASE

Laminate cabinets are available in a wide range of standard features and options. Additionally, custom configurations are possible. The website supports many of the features needed to quote and order commercial grade laminate or melamine products. The best value is made available by selecting from the standard features listed below.

Standard door

None

Standard Sizes

Width ranges 9" to 39"
Height ranges 42" to 96"
Depth ranges 9" to 30"

Standard features

Unfinished Sides – 3/4" HPL Interior, white liner exterior
Finished Sides - 3/4" HPL exterior, HPL interior
Finished bottom - 3/4" HPL exterior, HPL interior
Unfinished top - 3/4" HPL Interior, white liner exterior
Unfinished back – 1/2" HPL interior, white liner exterior
Unfinished shelves - 3/4" HPL 2 sides (Less than 27" wide)
Unfinished shelves – 1" HPL 2 sides (27" and wider)
Doors – None
Cabinet edge band - .018 PVC
Door edge band – .None

Standard Hardware

Hinges – None
Pull – None
Shelf Clips – 5mm metal spoon

Standard Options

Finished ends – 3/4" HPL exterior, 3/4" HPL exterior

Custom Options

Sub-Bases – 3/4" plywood construction (Cabinets have a flush bottom, sub-bases ordered separately)
Locks – None
Finished Interiors – Finished Interiors are standard because of the exposed open area. Please unselect FI if white melamine is desired

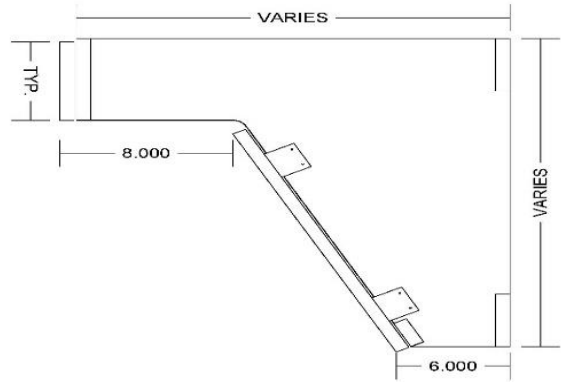
Accessory Options

See Accessory list which include Hardware, Components and Operations.

SB2F-ANGLED



VANITY with removable panel



Laminate cabinets are available in a wide range of standard features and options. Additionally, custom configurations are possible. The website supports many of the features needed to quote and order commercial grade laminate or melamine products. The best value is made available by selecting from the standard features listed below.

Standard door

None

Standard Sizes

Width ranges 18" to 39"
 Height ranges 18" to 28"
 Depth ranges 18" to 30"

Standard features

Unfinished Sides – 3/4" white melamine
 Finished Sides - 3/4" HPL exterior, white liner interior
 Unfinished bottom - 3/4" white melamine
 Unfinished top stretchers - 3/4" white melamine
 Unfinished back – None
 Unfinished shelves - None
 Unfinished shelves – None
 Doors and Drawer front – 3/4" HPL exterior, white liner interior
 Cabinet edge band - .018 PVC
 Door and Drawer front edge band – .018 PVC or 3mm PVC

Standard Hardware

Hinges – None
 Pull – 4" satin chrome wire pull
 Shelf Clips – None
 Hafele 262.94.024 Buttons removable panel

Standard Options

Finished ends – 3/4" HPL exterior, white liner interior

Custom Options

Sub-Bases – None
 Locks – None
 Finished Interiors – 3/4" HPL interiors with either white liner exterior or matching HPL exteriors, determined by finished end selection.

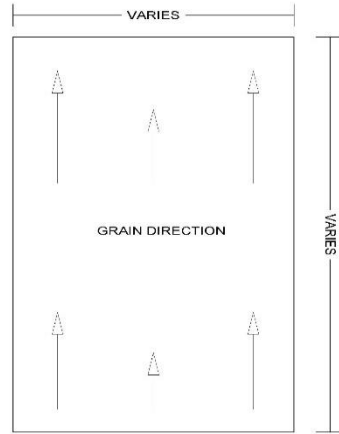
Accessory Options

See Accessory list which include Hardware, Components and Operations.

Laminate Panel



Panel, edging on all edges



TYPICAL: PANEL

Laminate cabinets are available in a wide range of standard features and options. Additionally, custom configurations are possible. The website supports many of the features needed to quote and order commercial grade laminate or melamine products. The best value is made available by selecting from the standard features listed below.

Standard Sizes

Width ranges 3" to 36"
Height ranges 12" to 96"

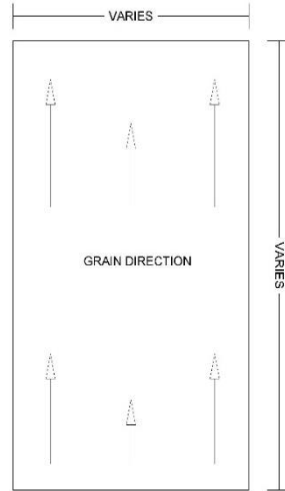
Standard features—

Core - 3/4" HPL two sides
Edge – all edges with .018 PVC or 3mm PVC (Determined by the door edge selection)

MEL - Panel



Melamine panel, edging on all edges



TYPICAL: MEL

Laminate cabinets are available in a wide range of standard features and options. Additionally, custom configurations are possible. The website supports many of the features needed to quote and order commercial grade laminate or melamine products. The best value is made available by selecting from the standard features listed below.

Standard Sizes

Width ranges 3" to 36"
Height ranges 12" to 96"

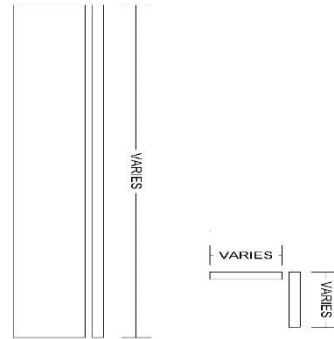
Standard features—

Core - ¼" melamine two sides
Edge – all edges with .018 PVC or 3mm PVC (Determined by the door edge selection)

C-FILLER



Corner filler, edged on one short edge with .018 PVC



TYPICAL: C-FILLER

Laminate cabinets are available in a wide range of standard features and options. Additionally, custom configurations are possible. The website supports many of the features needed to quote and order commercial grade laminate or melamine products. The best value is made available by selecting from the standard features listed below.

Standard Sizes

Width ranges 3" to 24"
Height ranges 12" to 96"

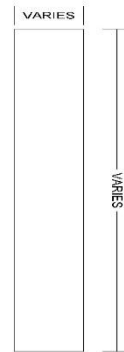
Standard features—

Core - $\frac{3}{4}$ " HPL one side, balanced backer
Edge - .018 PVC on one short edge

FILLER



Filler, edged on one short edge with .018 PVC



TYPICAL: FILLER

Laminate cabinets are available in a wide range of standard features and options. Additionally, custom configurations are possible. The website supports many of the features needed to quote and order commercial grade laminate or melamine products. The best value is made available by selecting from the standard features listed below.

Standard Sizes

Width ranges 3" to 36"
Height ranges 12" to 96"

Standard features-

Core - 3/4" HPL one side, balanced backer
Edge - .018 PVC on one short edge

Soft Close Hinge



BLUM 71B3580 110 Degree

Northway hardware accessories can be added to the cabinet selection. The price includes the hardware cost, machining, and installation. Customer supplied drawings will indicate the location and conditions related to each piece of hardware.

Accessory > Hardware > Soft Close Hinge

BLUM 71B3580 110 Degree Soft Close Hinge W/Plate



Soft Close Slide



Richelieu 1045H



Northway hardware accessories can be added to the cabinet selection. The price includes the hardware cost, machining, and installation. Customer supplied drawings will indicate the location and conditions related to each piece of hardware.

Accessory > Hardware > Soft Close Slide

Richelieu 1045H 20" soft close ball bearing slide / Load Capacity 77IB



4" Wire Pull



Hardware Resource S271-4



Northway hardware accessories can be added to the cabinet selection. The price includes the hardware cost, machining, and installation. Customer supplied drawings will indicate the location and conditions related to each piece of hardware.

Accessory > Hardware > Pull

Colors May Vary

FINISH



Satin Nickel



Matte Black



Polished Chrome



Brushed Oil
Rubbed Bronze



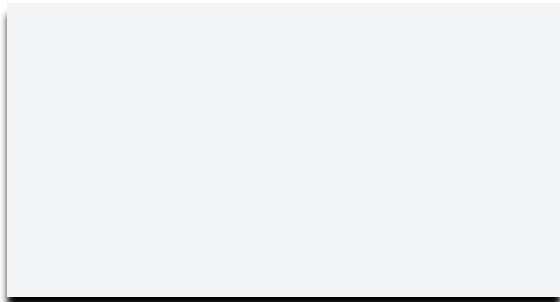
Brushed Chrome



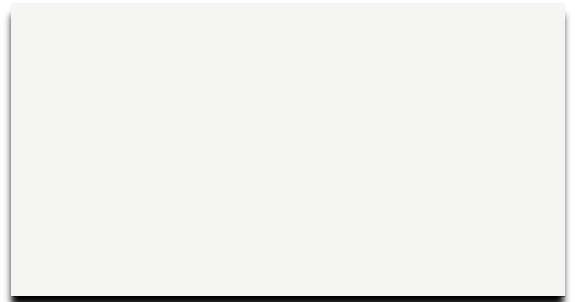
Polished Brass



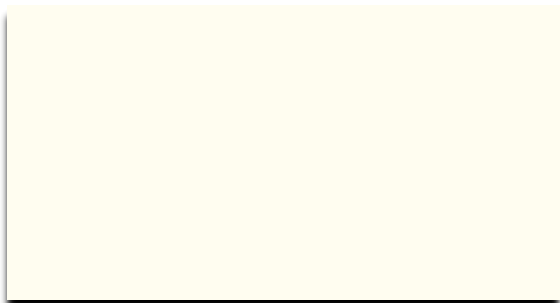
Wilsonart Standard Laminate



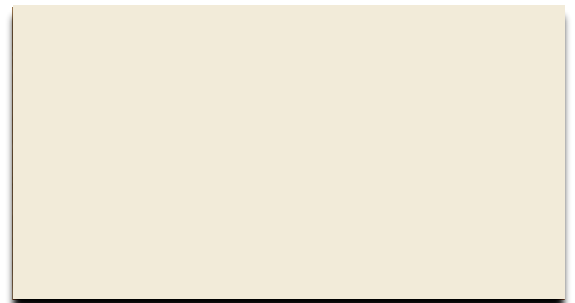
Wilsonart
D354-60
Designer White
Matte Finish



Wilsonart
1573-60
Frosty White
Matte Finish

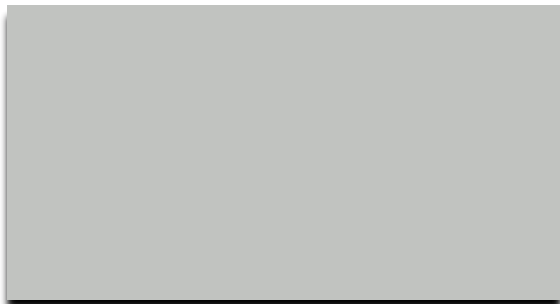


Wilsonart
D427-60
Matte Finish

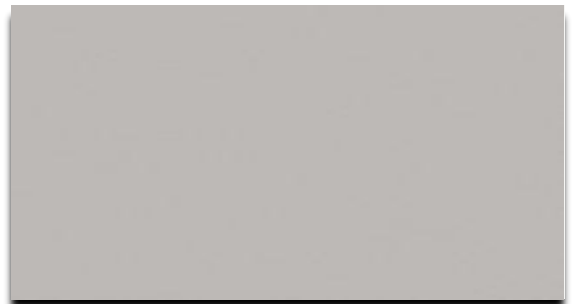


Wilsonart
D30-60
Natural Almond
Matte Finish

Wilsonart Standard Laminate



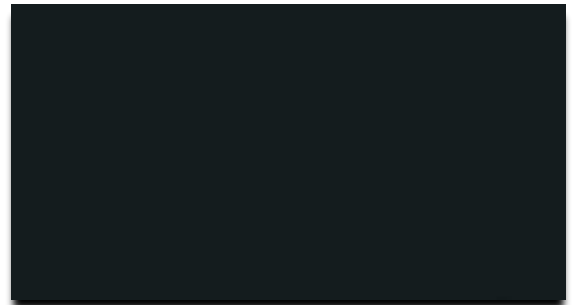
**Wilsonart
D92-60
Dove Grey
Matte Finish**



**Wilsonart
D381-60
Fashion Grey
Matte Finish**



**Wilsonart
D90-60
North Sea
Matte Finish**



**Wilsonart
1595-60
Black
Matte Finish**

Wilsonart Standard Laminate



Wilsonart
10776-60
Kensington Maple
Matte Finish



Wilsonart
7909-60
Fusion Maple
Matte Finish



Wilsonart
7928-38
Castle Oak
Fine Velvet Finish



Wilsonart
7996-38
Natural Recon
Fine Velvet Finish

Wilsonart Standard Laminate



**Wilsonart
7946-38
Brazilwood
Fine Velvet Finish**



**Wilsonart
7937-38
River Cherry
Fine Velvet Finish**



**Wilsonart
7929-38
Hunting Maple
Fine Velvet Finish**



**Wilsonart
7054-60
Wild Cherry
Matte Finish**

CCD

DESIGNED TO ELEVATE ANY SPACE

*Colors May Vary

Wilsonart Standard Laminate



Wilsonart
7994-38
Lowell Ash
Fine Velvet Finish

Melamine ULTRAPAN Options



Any Laminate or Melamine
outside of standard selection will
require additional Lead-Times.

CCD

DESIGNED TO ELEVATE ANY SPACE

*Colors May Vary

**Matching Edge Banding - .018 /
3MM**



Timberline CB-093 / CB-088 LP-100 / BZ-10



Timberline Door and Drawer Lock



Northway hardware accessories can be added to the cabinet selection. The price includes the hardware cost, machining, and installation. Customer supplied drawings will indicate the location and conditions related to each piece of hardware.

Accessory > Hardware > Timberline Lock > Keyed Alike Only